

## Owasso Walkthrough Q&As

1) Q: Are we replacing UPSs with like size?

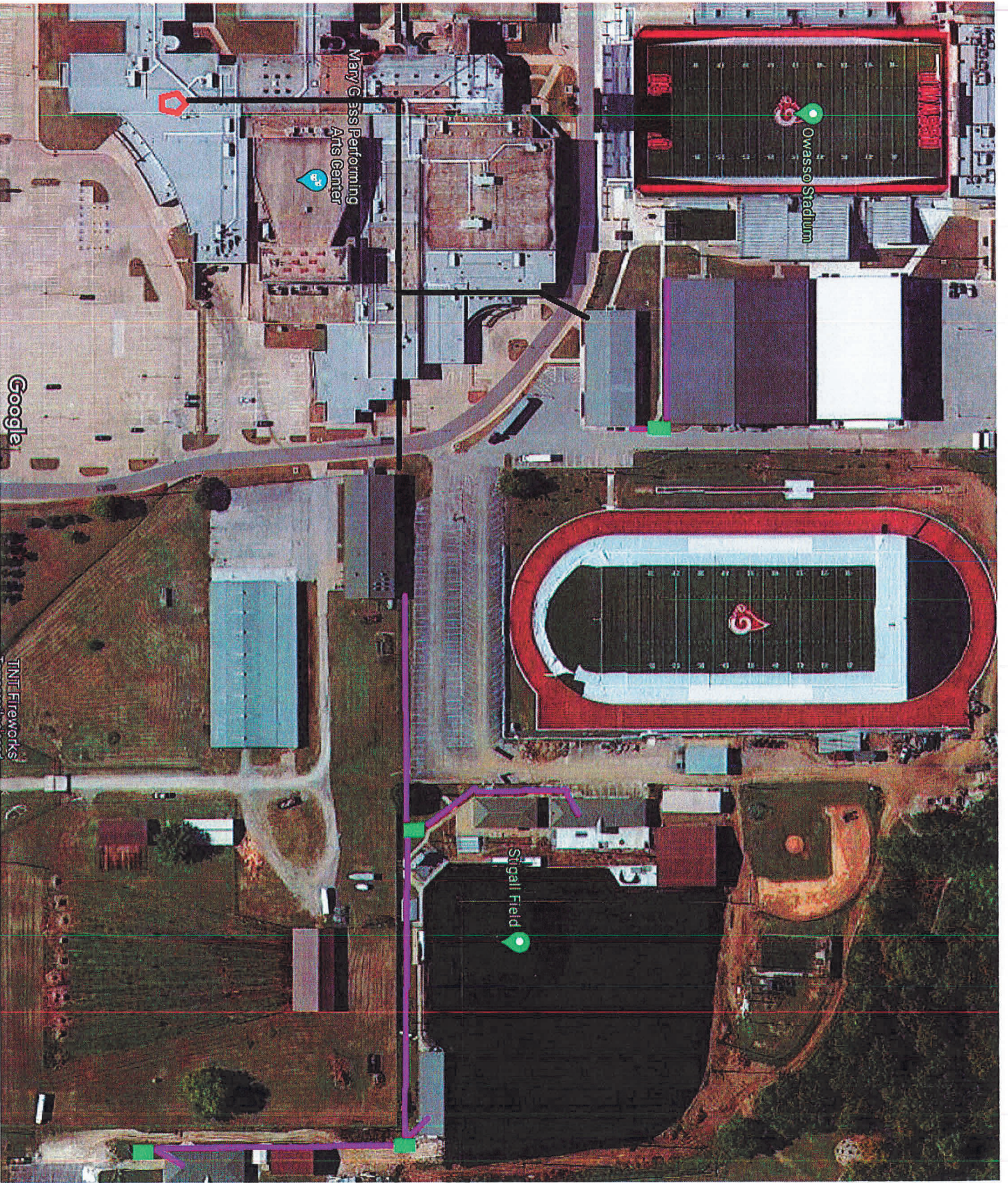
A: Yes

2) Q: Will all the GBICs be duplex?

A: Yes

3) What type of fiber patch panels?

A: Fiber patch panels should be the same as the ones in the MDF.



Erate 2021-2022 Year 24 Requested Items for Bid

		Rack	Switch	UPS	Patch Cable	WAP	GBIC	Stacking Cable
MDF - High School East Campus	Add 6 10GB GBIC Modules				6		6	
	Add 6 single-mode patch cables							
2nd Floor IT Closet near Room 260	Replace 3 Extreme switches with Dell N2048P or equivalent		4					
	Add 1 Dell N2048P or equivalent	1						
	Replace rack with 24U rack			1				4
	Replace 1 UPS							
	Add 4 switch stacking cables							
2nd Floor Closet Near Lounge	Replace 1 Extreme switch with Dell N2048P or equivalent		3					
	Add 2 Dell N2048P or equivalent							
	Replace rack with 18U rack	1						
	Replace 1 UPS			1				3
	Add 3 switch stacking cables							
Room 230	Add 1 Dell N2048P switch or equivalent		1					
	Add 1 switch stacking cables							1
Room 234	Replace 2 Extreme switches with Dell N2048 or equivalent		2					
	Replace 1 UPS			1				
	Add 2 switch stacking cables							2
Room 224	Replace 5 Extreme switches with Dell 2048P or equivalent		5					
	Replace rack with 36U WALL-MOUNT rack	1						5
	Add 5 switch stacking cables							
Room 206	Replace 2 Extreme switches with Dell N2048P or equivalent		2					
	Add 2 switch stacking cables							2
Old Commons Area	Replace 2 Extreme switches with Dell N2048P or equivalent		3					
	Add 1 Dell N2048P or equivalent			1				3
	Replace 1 UPS							
	Add 3 switch stacking cables							
Athletic Office	Replace 1 Extreme switch with Dell N2048P or equivalent		2					
	Add 1 Dell N2048P or equivalent							2
	Add 2 switch stacking cables							
Choir Rack	Replace 1 Extreme switch with Dell N2048P or equivalent		1					
	Add 1 switch stacking cables							1
Band Rack	Replace 1 Extreme switch with Dell N2048P or equivalent		1					
	Add 1 switch stacking cables							1
Performing Arts Center	Replace 1 Extreme switch with Dell N2048P or equivalent		2					
	Add 1 Dell N2048P or equivalent							2
	Add 2 switch stacking cables							

		Rack	Switch	UPS	Patch Cable	WAP	GBIC	Stacking Cable
1st Floor Closet Near Lounge	Replace 1 Extreme switch with Dell N2048P or equivalent Add 1 switch stacking cables		1					1
Agricultural Education Building	Replace multi-mode fiber with single-mode Add 1 GBIC Module Add 1 single-mode patch cable				1		1	
Grass behind BB Press Box	Place a vault							
Baseball Fieldhouse	Add single-mode fiber Add 1 Aerohive AP1130 or equivalent WAP outside Add 1 GBIC Module Add 1 single-mode patch cable					1	1	
Grass off SE corner of BB Weight Room	Place a vault							
Baseball Weight Room	Add single-mode fiber Add 1 Dell N2048P or equivalent Add 1 Aerohive AP250 or equivalent WAP inside Add 1 GBIC Module Add 1 single-mode patch cable Add 1 switch stacking cables **Will use a rack from OPS inventory at this location		1			1	1	1
Grass off SW corner of SB Fieldhouse	Place a vault							
Softball Fieldhouse	Add single-mode fiber Add 1 Aerohive AP1130 or equivalent WAP outside Add 1 UPS Add 1 GBIC Module Add 1 single-mode patch cable			1		1	1	
Track Fieldhouse	Replace 1 Extreme switch with Dell N2048P or equivalent Add 1 UPS Add 1 GBIC Module Add 1 single-mode patch cable Add 1 switch stacking cables		1	1	1			1
Grass off SE corner of FB Practice Facility	Place a vault							
Football Practice Facility	Add 1 Dell N2048P or equivalent Add 1 12U rack Add 1 UPS Add 5 Aerohive AP650X or equivalent WAP Add 1 GBIC Module Add 1 single-mode patch cable Add 1 switch stacking cables	1	1	1		5	1	1
Basketball Practice Facility	Add 5 Aerohive AP650X or equivalent WAP					5		

		Rack	Switch	UPS	Patch Cable	WAP	GBIC	Stacking Cable
Student Services Center	Replace 2 UPS			2				
Alor Elementary	Replace 1 UPS			1				
7th Grade Center	Replace rack with 24U WALL-MOUNT Rack	1						
<b>Totals</b>		<b>5</b>	<b>30</b>	<b>10</b>	<b>12</b>	<b>13</b>	<b>12</b>	<b>30</b>

**470 Function Totals**

Cabling	2 - Fiber runs, 30 - switch stacking cables, 8 - single-mode patch cables							
Racks	12 - racks							
Switches	30 - switches							
UPS/Battery Backup	10 - UPS							
WAP	15 - WAP							
Antennas, Connectors and Related	8 - GBIC Modules (RFP modified to 12)							

**Total Needing Bid**  
 (44 required, 4 patch cables on hand)

Fiber run #1 (East/West run)	42 strand single-mode fiber (6 Ag, 6 BB FH, 6 BB Vault, 6 BB WR, 6 SB FH, SB 12 Vault)							
Fiber run #2 (North/South run)	30 strand single-mode fiber (6 Track, 6 FB PF, 18 SB Vault)							
All Devices Licensing	Must provide location and mac address/serial number for all devices Requesting Erate eligible licensing for switches and WAPs							