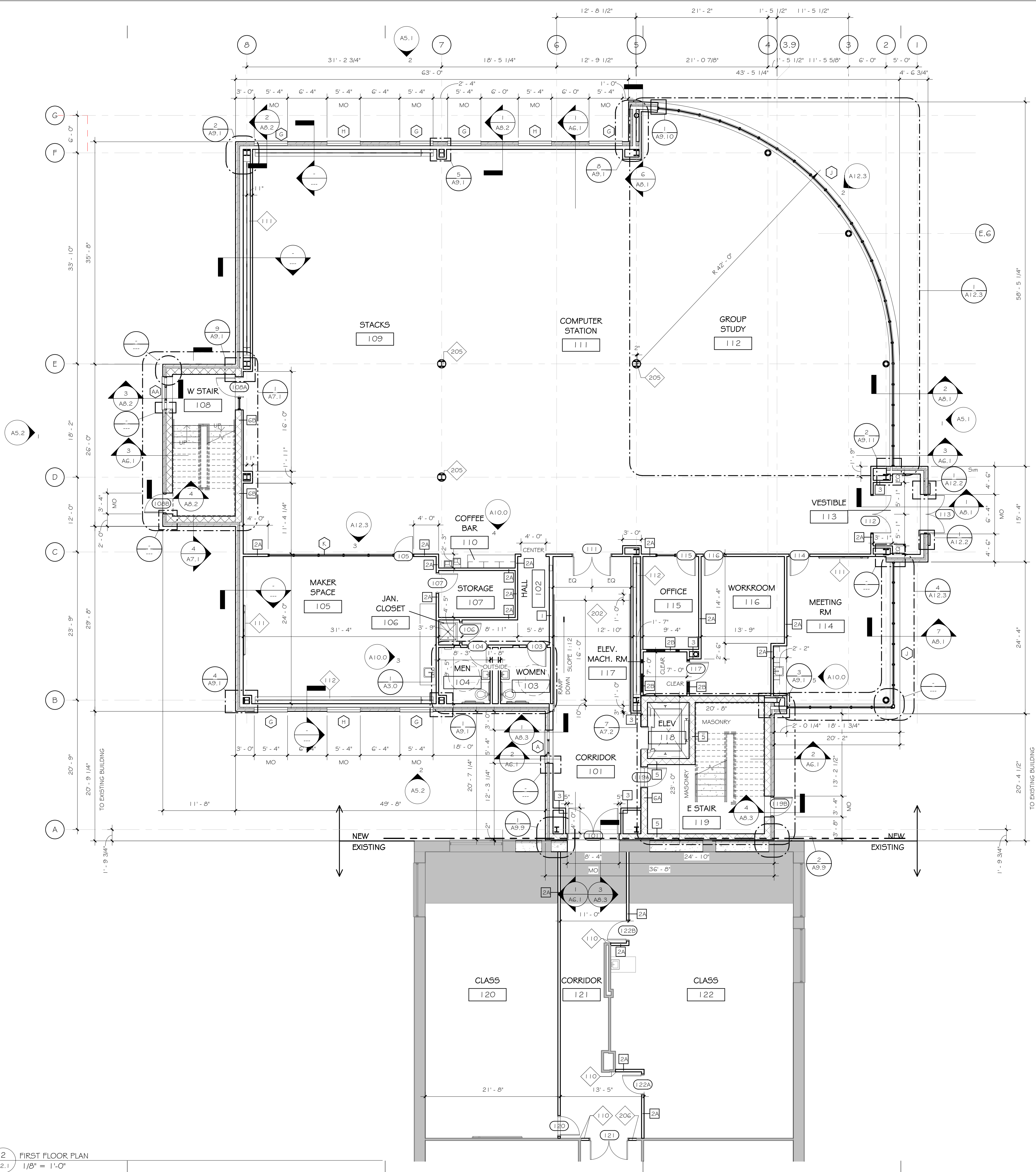


11/18/2014 10:53:44 AM

FLOOR PLAN KEYED NOTES	
110	ALIGN
111	VISUAL DISPLAY BOARD
112	X BRACING, RE: STRUCTURAL
202	RAMP
205	16" ROUND COLUMN COVER TO BE CENTERED AROUND COLUMN. REFER TO FINISH SCHEDULE.
206	NEW GYPSUM BOARD WALL TO MATCH EXISTING DEPTH.

2 FIRST FLOOR PLAN
A2.1 1/8" = 1'-0"



bond
ARCHITECTS
222 SOUTH CENTRAL AVE.
SUITE# 100
ST. LOUIS, MO 63105
TEL: 314.863.4994
FAX: 314.863.4996
www.bondarchitectsinc.com
Bond Architects, Inc.
Missouri State Certificate of Authority #2009027409

Ameresco
General Contractor
Certificate of Authority #XXXXXX
9890 Clayton Rd #220
St. Louis, MO 63124
314.727.5412 tel
314.727.5412 fax

David Mason and Associates
Structural
Certificate of Authority #001103
800 South Vandeventer Ave.
St. Louis, MO 63110
314.534.1030 tel
314.534.1053 fax

G & W Engineering
MEP
Certificate of Authority #2002018767
138 Weldon Parkway
Maryland Heights, MO 63043
314.469.3737 tel
314.469.5420 fax

UCHS Library Addition
7401 Balson Ave.
University City, MO 63130
University City School District
8136 Grady Road
University City, Mo 63130

PROGRESS SET

Project No:	14037
Revisions	
Description	Date

This drawing and the details on it are the sole property of the architect and may be used for this specific project only. It shall not be loaned, copied or reproduced, in whole or in part, or for any other purpose or project without the written consent of the Architect.
Copyright © 2014 by Bond Architects, Inc.

NOT FOR CONSTRUCTION

Arthur D. Bond III
MO A-6301

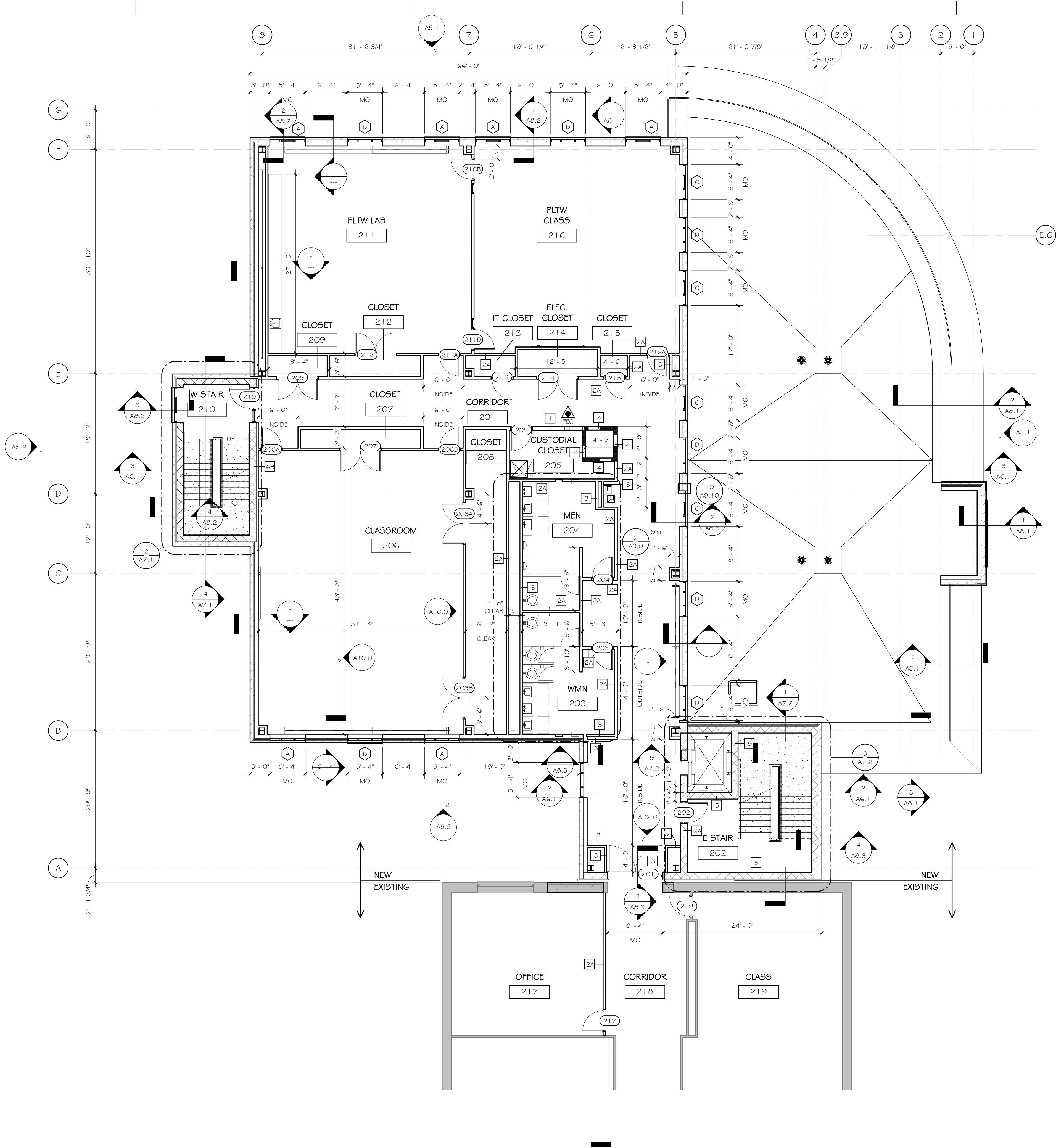
The Professional Architects seal affixed to this sheet applies only to the material and items shown on this sheet. All drawings, instruments or other documents not exhibiting this seal shall not be considered prepared by this architect, and this architect expressly disclaims any and all responsibility for such plan, drawings or documents not exhibiting this seal.

DATE: 10.23.2014

First Floor Plan

A2.1

FLOOR PLAN KEYED NOTES



N
1
A2.2
1/8" = 1'-0"
SECOND FLOOR PLAN



222 SOUTH CENTRAL AVE.
SUITE# 100
ST. LOUIS, MO 63105
TEL: 314.863.4994
FAX: 314.863.4996
www.bondarchitectsinc.com
Bond Architects, Inc.
Missouri State Certificate of Authority #2009027409

Ameresco
General Contractor
Certificate of Authority #XXXXXX
9890 Clayton Rd #220
St. Louis, MO 63124
314.727.5412 tel
314.727.5412 fax

David Mason and Associates
Structural
Certificate of Authority #001103
800 South Vandeventer Ave.
St. Louis, MO 63110
314.534.1030 tel
314.534.1053 fax

G & W Engineering
MEP
Certificate of Authority #2002018767
138 Weldon Parkway
Maryland Heights, MO 63043
314.469.3737 tel
314.469.5420 fax

UCHS Library Addition
7401 Balson Ave.
University City, MO 63130

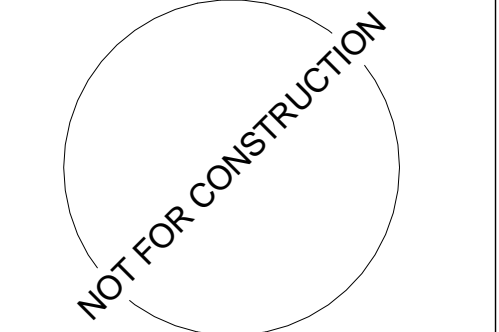
University City School District
8136 Grady Road
University City, Mo 63130

PROGRESS SET

Project No: 14037

Revisions	
Description	Date

This drawing and the details on it are the sole property of the architect and may be used for this specific project only. It shall not be loaned, copied or reproduced, in whole or in part, or for any other purpose or project without the written consent of the Architect.
Copyright © 2014 by Bond Architects, Inc.



Arthur D. Bond III
MO A-6301

The Professional Architects seal affixed to this sheet applies only to the material and items shown on this sheet. All drawings, instruments or other documents not exhibiting this seal shall not be considered prepared by this architect, and this architect expressly disclaims any and all responsibility for such plan, drawings or documents not exhibiting this seal.

DATE: 10.23.2014

Second Floor Plan

A2.2

UCHS Library Addition
7401 Balson Ave.
University City, MO 63130

PROGRESS SET

Project No: 14037	
Revisions	
Description	Date

This drawing and the details on it are the sole property of the architect and may be used for this specific project only. It shall not be loaned, copied or reproduced, in whole or in part, or for any other purpose or project without the written consent of the Architect.
Copyright © 2014 by Bond Architects, Inc.

NOT FOR CONSTRUCTION

Arthur D. Bond III
MO A-6301

The Professional Architects seal affixed to this sheet applies only to the material and items shown on this sheet. All drawings, instruments or other documents not exhibiting this seal shall not be considered prepared by this architect, and this architect expressly disclaims any and all responsibility for such plan, drawings or documents not exhibiting this seal.

DATE:	10.23.2014
-------	------------

Third Floor Plan

A2.3

