



**eRate Walkthrough Q&A - Nov 11th & 13th**

**Is conduit required in the SMS gym?**

- No conduit in SMS gym area. Ziptied cabling is fine.

**Do you require J-hooks?**

- Yes

**Is this to include removal of the old cabling?**

- Yes. Also including wire mold and conduit and dispose

**Can the existing wire mold be used?**

- No. Replace wire mold and wall boxes and match wall color as closely as possible.

**Which count should be used for bids, the RFP or walkthrough?**

- Use the count on the RFP.

**What model networking equipment is preferred?**

- Aruba 2930F(JL256A) switches and Aruba IAP515(Q9H63A) WAPs

**Are patch cables to be provided by the vendor?**

- Yes

**Is a rack needing in the SMS gym?**

- Yes. 45U 2 post rack.

**What are your preferences for UPSs?**

- 1500 VA rack-mountable

**Cable color preference?**

- No specific cable color

**Wall Plates (Color) in ALE/Annex & SMS-Fine Arts?**

- White Plate / White Jack - ALE/ANNEX
- Stainless Steel in SMS - FineArts

**Cabling preference?**

- Cat 6

**Use existing cable paths?**

- Yes



**SHERIDAN  
SCHOOL DISTRICT**  
*Inspire. Empower. Serve.*

**Surface mount back on the existing surface mount?**

- No Surface mount if all possible

**ALE Office (SPED)?**

- Replace existing drops must have 2 ports, bid RFP count

**Digital Copies of the Maps?**

- Yes uploaded

**Lift Provided?**

- No, will need for two rooms in Fine Arts

**SMS FineArts Data Closet wiring: Vert wire management?**

- Yes both sides

**Unloaded Patch Panels?**

- Yes both sides

**Jack colors on the panel side?**

- Yes black



SHERIDAN  
SCHOOL DISTRICT  
*Inspire. Empower. Serve.*

---

## **Project B:**

---

### **ALC to Bus Barn Fiber?**

- Yes, you existing pipe (conduit) to buildings.

### **Strand Count?**

- 12 Strand

### **Use the same runs/paths?**

- All runs to MDF unless over the length

### **Connectors?**

- Same LC Connectors

### **New rack?**

- Yes new LIU rack mount

### **Rack Mount Panel in Field House?**

- Yes

### **Riser cable?**

- Yes

### **Remove current fiber?**

- Yes one continuous run

## Alternative Learning Center / Annex

Building Demarc: ●

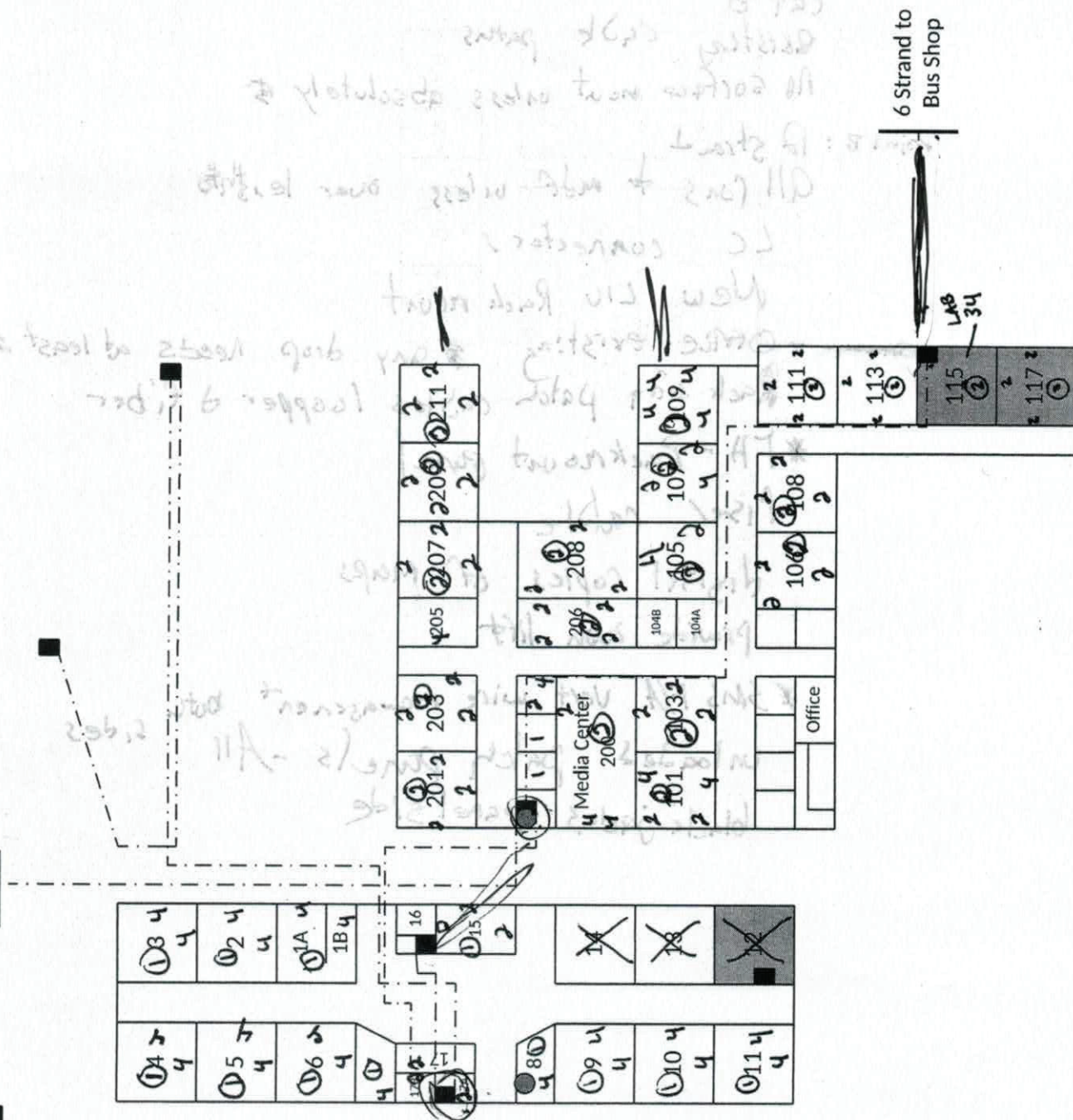
Network Equipment:

Fiber Path: - . - . -

Lab: 

Defunct:

24 Strand to SHS Lan Room



510 W. Church St.  
Sheridan, AR 72150  
(870) 942-3232

*[Faint handwritten notes at the bottom of the page, possibly bleed-through from the reverse side.]*

2012	203	2	2
2012	203	2	2

Media Center	200	2	2
2012	203	2	2

New York Rock front

2011 (2012)  
12/2/2011

6 Strand to  
Bus Shop

34

11-11-78

# Sheridan Middle School - (OLD) Exiting

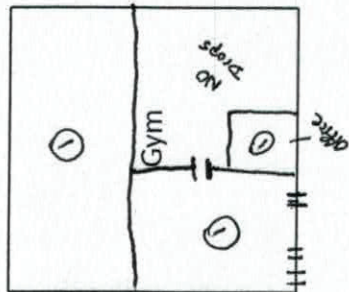
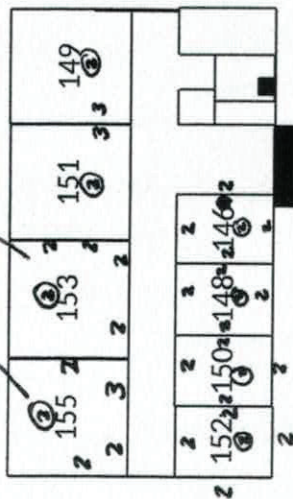
Building Demarc: ●

Network Equipment: ■

Fiber Path: - - - -

Lab: ■

3 in office  
3 in office



24 Strand to  
Mitchell Hall

500 N. Rock St.  
Sheridan, AR 72150  
(870) 942-3813



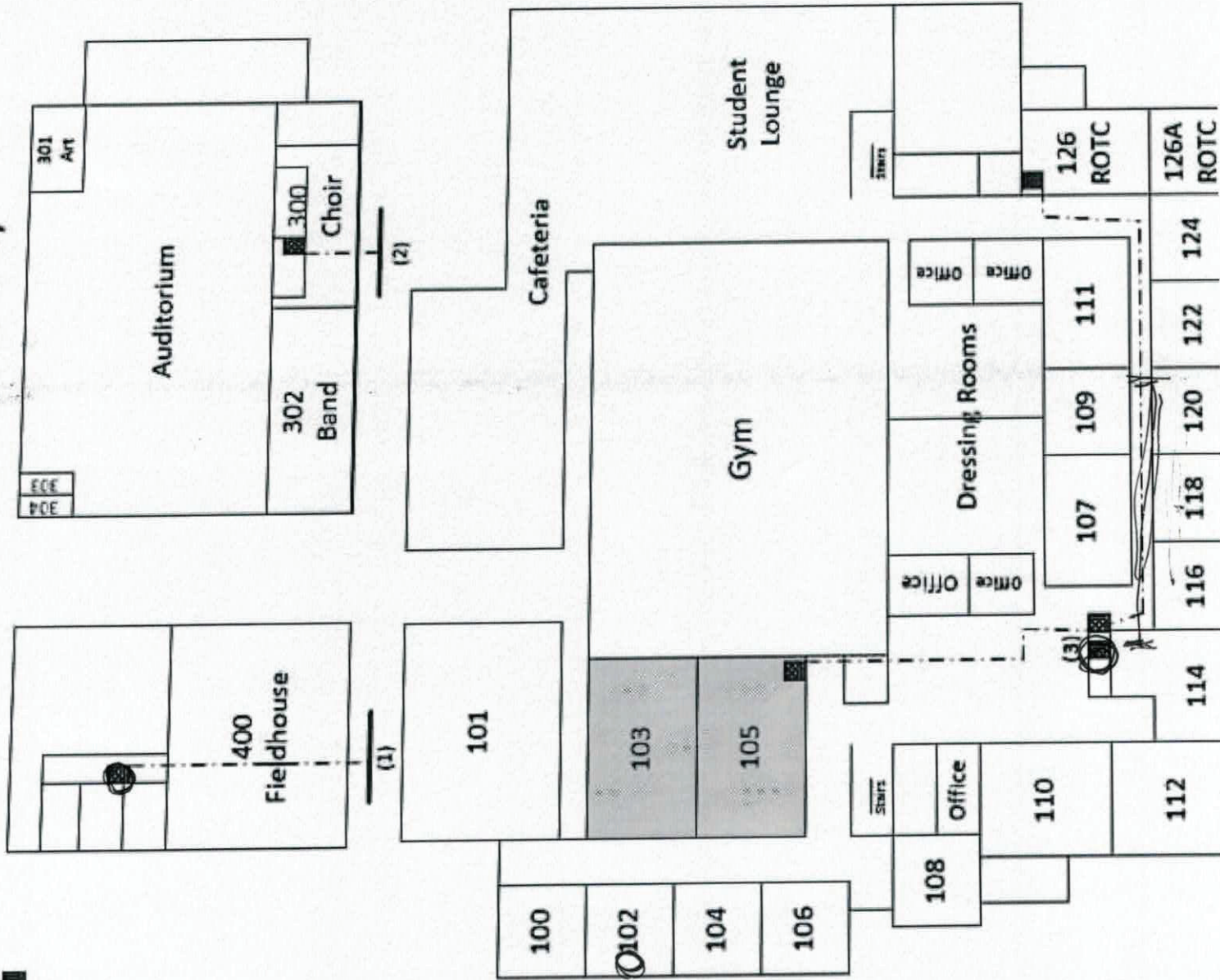
Network Equipment: ■

Fiber Path: - - - -

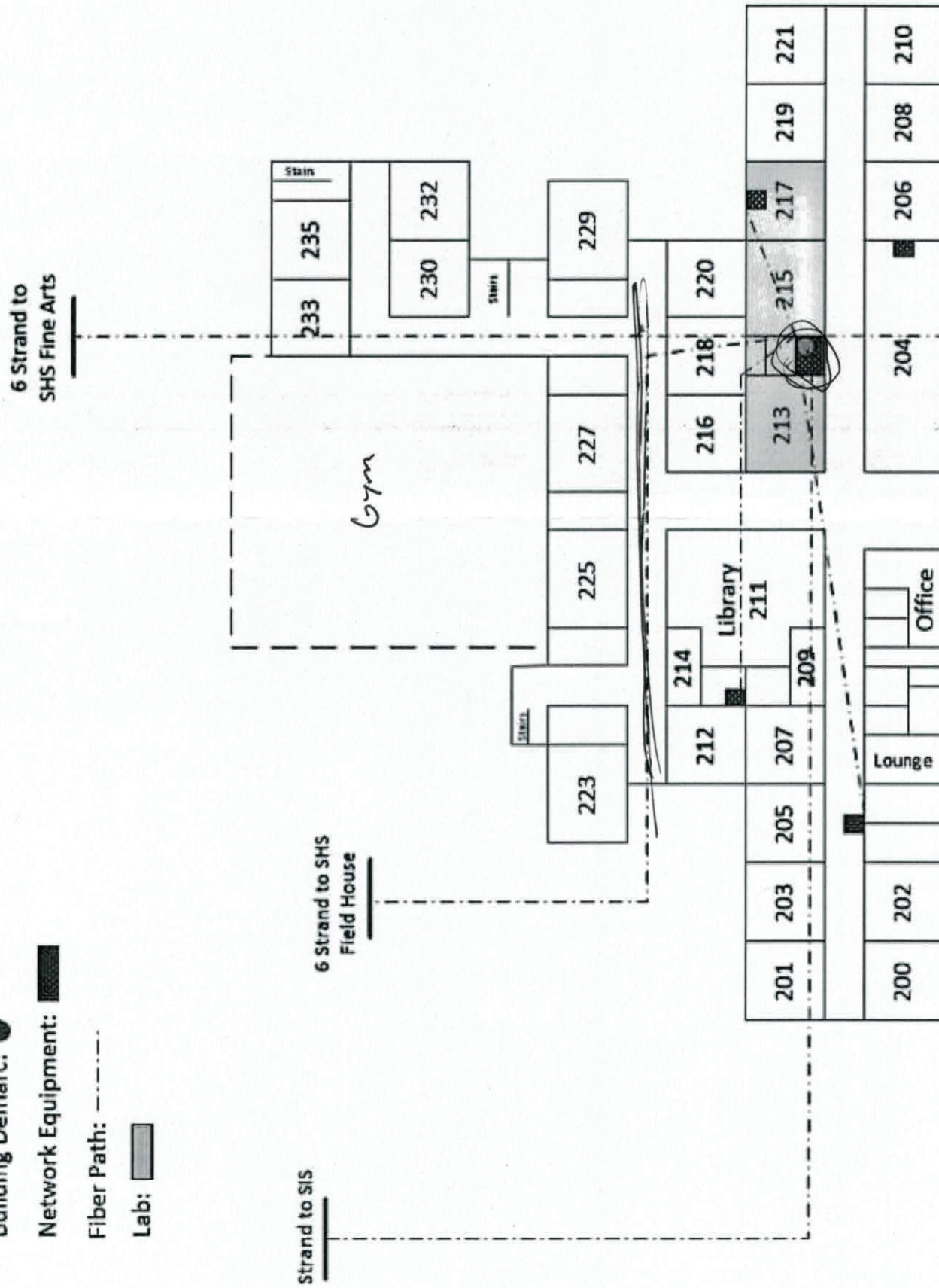
Lab: ■

### Fiber

- (1) 6 Strand to SHS Lan Room
- (2) 12 Strand to SHS Lan Room
- (3) SHS Lan Room Upstairs Entry F



700 W. Vine St.  
Sheridan, AR 72150  
(870) 942-3137  
LEA: 2705021

Lab: 

700 W. Vine St.  
Sheridan, AR 721  
(870) 942-3137

LEA: 2705021

### 24 Strand SM Fiber to Admin

## 24 Strand SM Fiber to Windstream CO

24 Strand Fiber to ALC Office/SFA Campus