

② Cat 6 Patch Panel

⑬ AP's

1400' Cat 6 Cable

① Cisco CBS350-8P-2G switch

① TrippLite 6U Rack (SRW6UDP)

① Startech 7U Rack shelf (ca3shelfv2u)

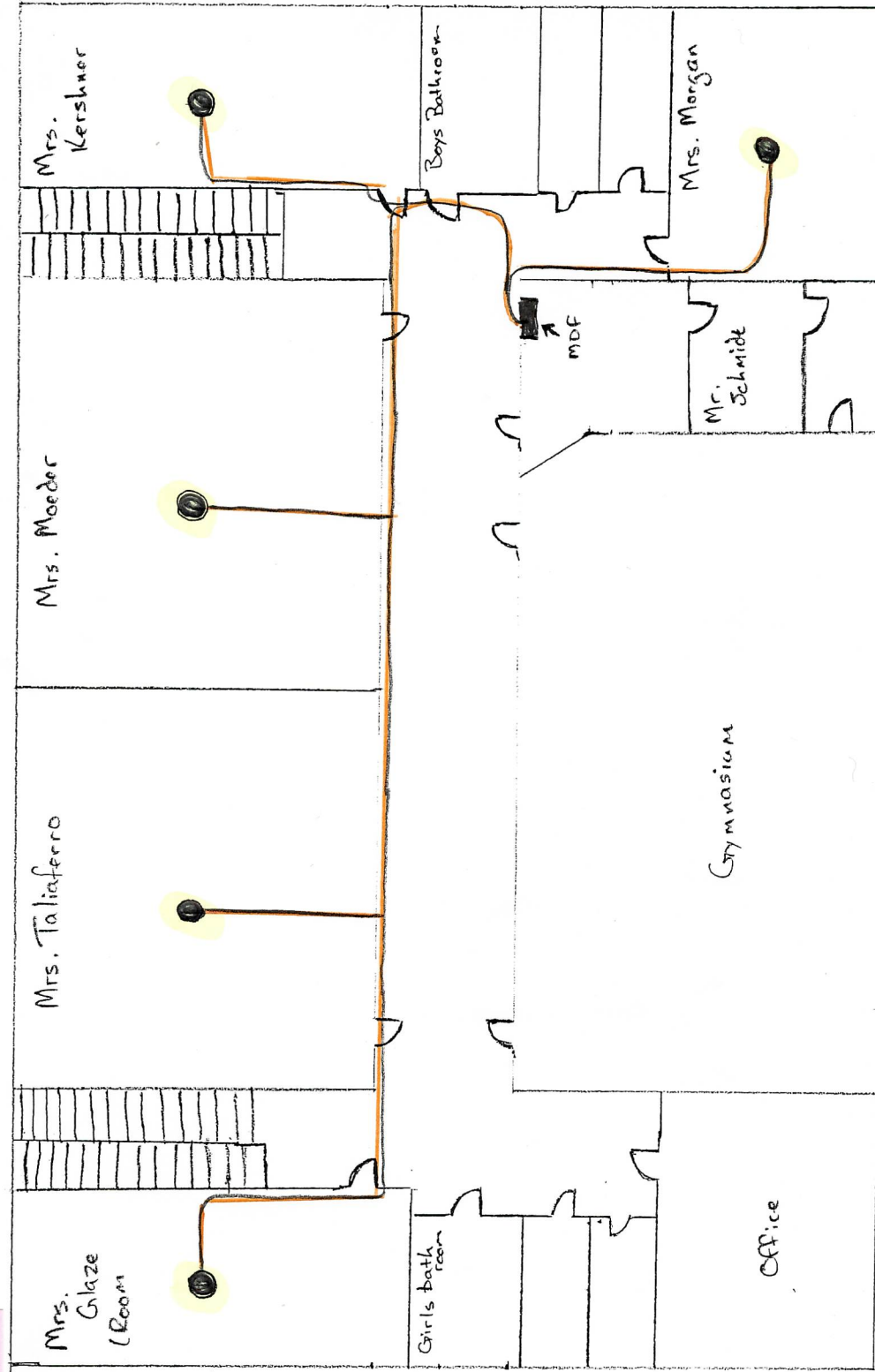
① CyberPower 300w Rackmount UPS (OR500LCDRM1U)

Mrs. Butler

Mrs. Peach

AP connects to 2nd floor IDF

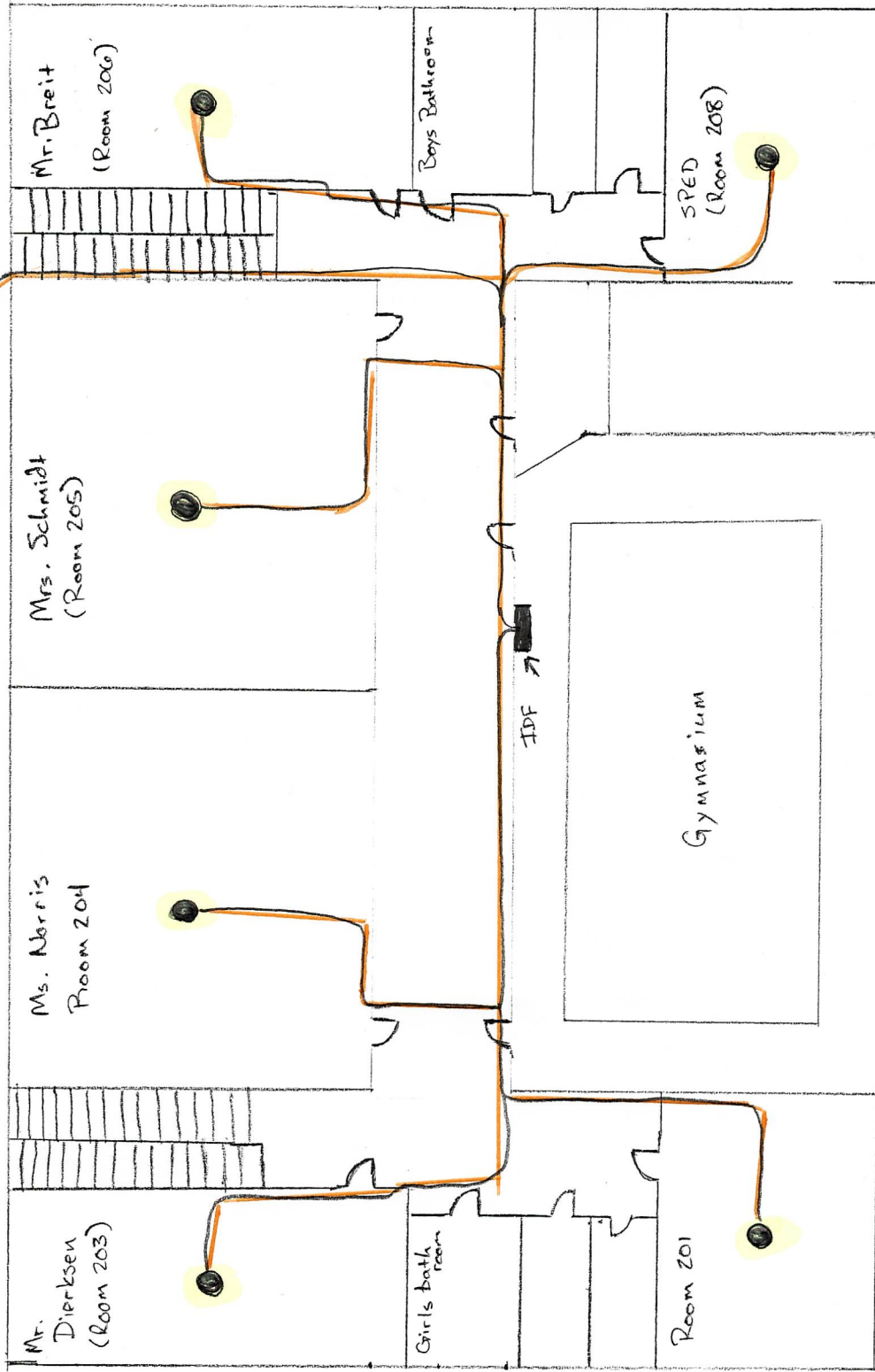
### 1st Floor



Mrs. Butler

Mrs. Peach

2nd Floor



Mrs. Jacobs