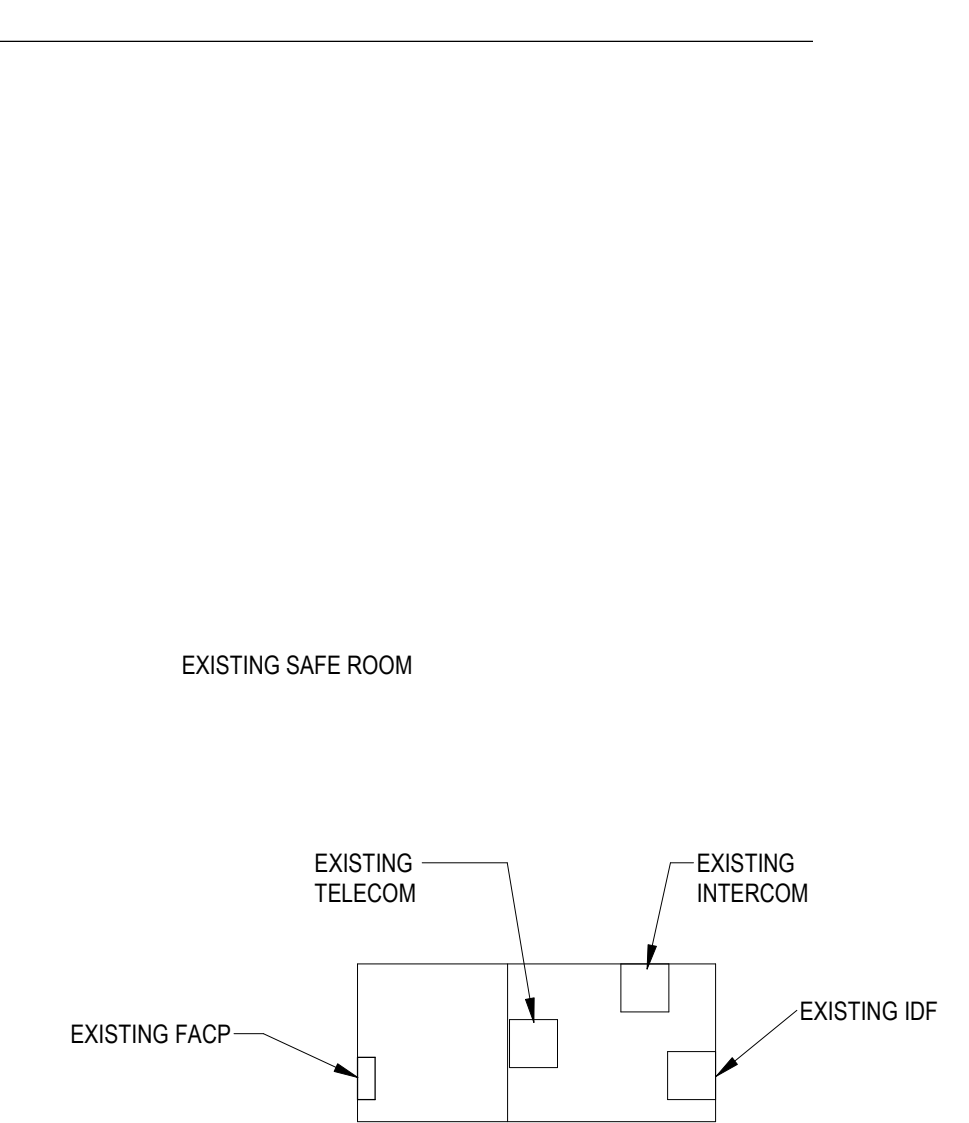


- KEYED ELECTRICAL NOTES**
- ① CONNECT EXHAUST FAN TO ROOM RECEPTACLE CIRCUIT AND ROUTE THRU AUX. CONTACT ON LIGHTING OCCUPANCY CONTROL SENSOR. REFER TO LIGHTING DRAWINGS FOR DETAILS/LOCATIONS. (REFER TO DETAIL # ON EF.#)
  - ② TRANSFORMER "T":  
75 KVA  
PRIMARY VOLTAGE - 480/277  
SECONDARY VOLTAGE - 208/120
  - ③ PROVIDE POWER FOR EXISTING SCOREBOARD BEING RELOCATED. VERIFY LOCATION AND MOUNTING HEIGHT WITH CONSTRUCTION MANAGER.



NORTH  
1  
E2.1A  
1/8" = 1'-0"

**FIRST FLOOR PLAN - POWER**



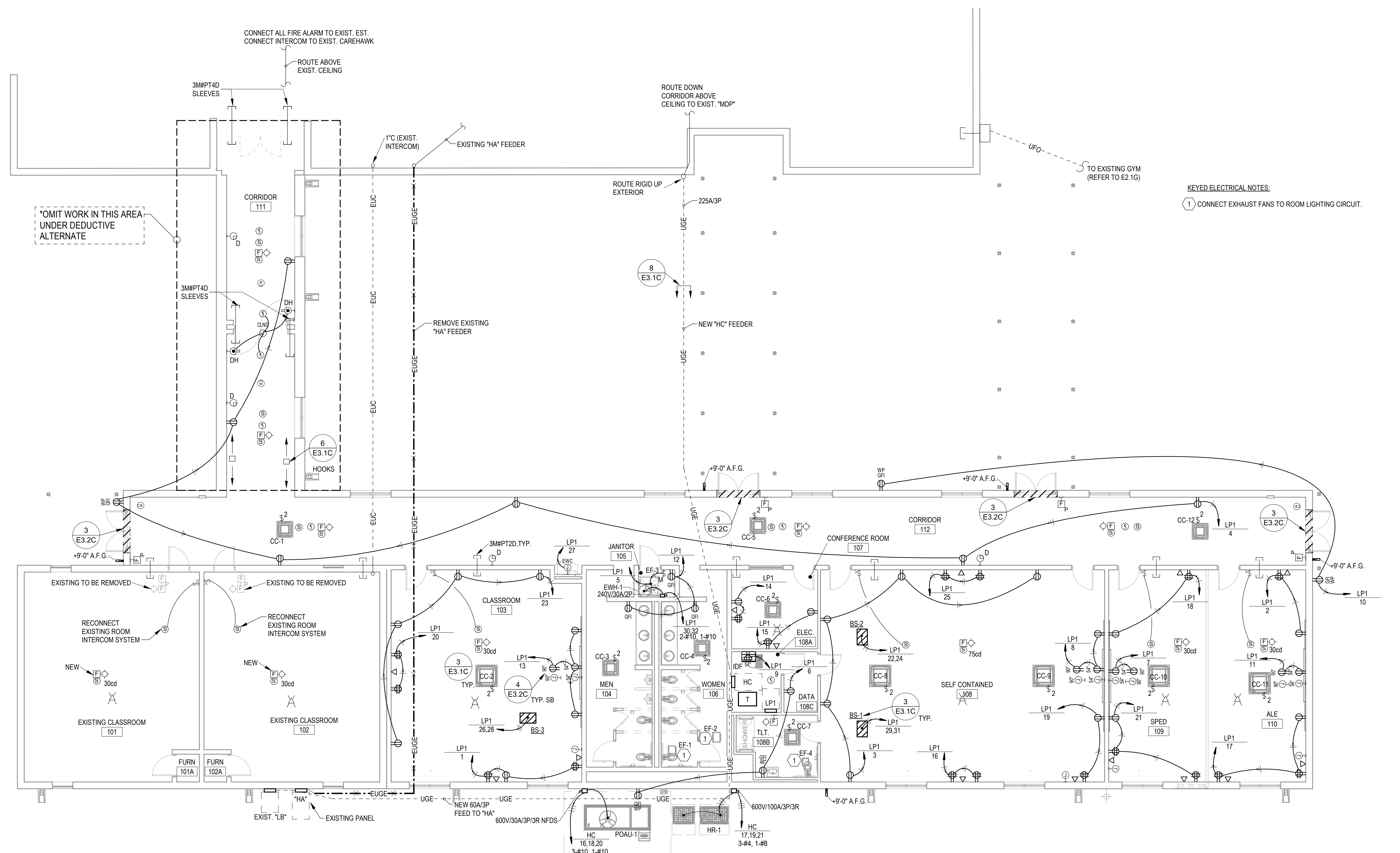
DATE: 9-8-2020  
PROJECT NO: 19074  
DRAWN BY: NEJ  
REVISION:



**CAUTION !!!**

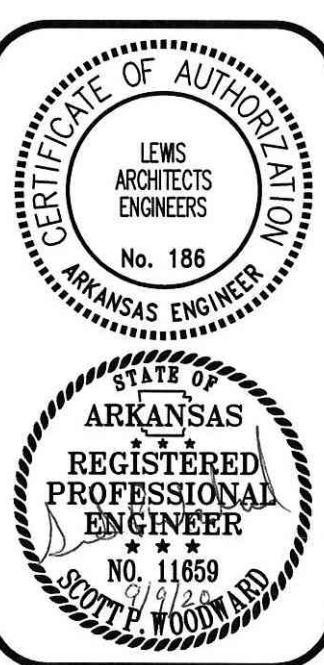
CONTRACTOR MUST HAVE ONE CALL LOCATE AND MARK ALL EXISTING UTILITIES PRIOR TO TRENCHING OR BORING. ELECTRIC CONTRACTOR MUST LOCATE AND MARK ALL EXISTING CONDUITS AND PIPES OWNED BY PROPERTY OWNER PRIOR TO TRENCHING OR BORING.

SITE ELECTRICAL LEGEND	
EOHE	EXISTING OVERHEAD ELECTRICAL
EUDE	EXISTING UNDERGROUND ELECTRICAL
EUT	EXISTING UNDERGROUND TELEPHONE
EUTV	EXISTING UNDERGROUND CABLE (TELEVISION)
EUF0	EXISTING UNDERGROUND FIBER OPTIC
ELIC	EXISTING UNDERGROUND SYSTEMS CONDUIT
OHE	OVERHEAD ELECTRICAL
UGE	UNDERGROUND ELECTRICAL
UT	UNDERGROUND TELEPHONE
UTV	UNDERGROUND CABLE (TELEVISION)
UF0	UNDERGROUND FIBER OPTIC
UC	UNDERGROUND SYSTEMS CONDUIT
- - - - -	INDICATES UTILITY TO BE REMOVED
(P) - (S)	(P-INDICATES PRIMARY; S-INDICATES SECONDARY)
J	JUNCTION BOX - CONNECT TO EQUIPMENT AS REQUIRED
DS	DISCONNECT SWITCH - w/GROUNDING LUG, SIZE AS NOTED
FDS	FUSIBLE DISCONNECT SWITCH-w/GROUND LUG, SIZE AS NOTED
M	MOTOR - SIZE AS NOTED ON PLANS
SP	SURFACE MOUNTED PANEL BOARD
WC	WIRE AND CONDUIT - AS NOTED
HP	HOMERUN TO PANEL-ARROWS INDICATE NUMBER OF CIRCUITS.
WH	WEATHERHEAD - SIZE AS NOTED ON PLANS
PP	POWER POLE
TP	TELEPHONE PEDESTAL



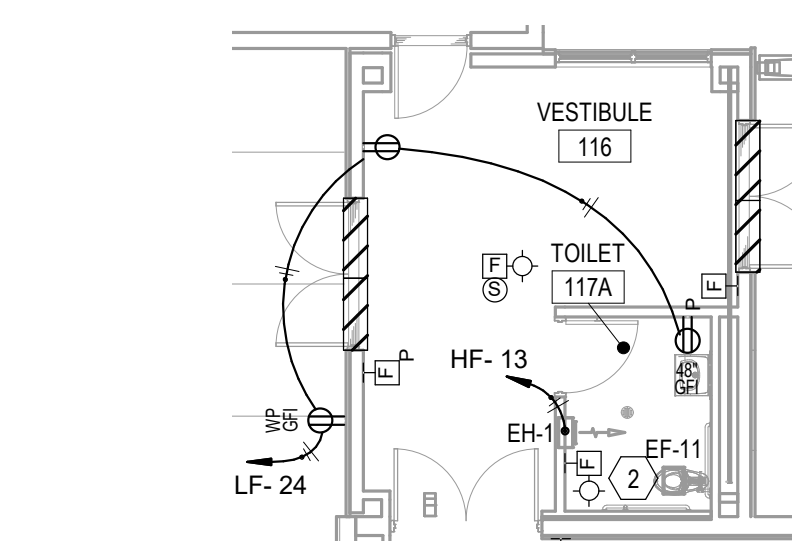
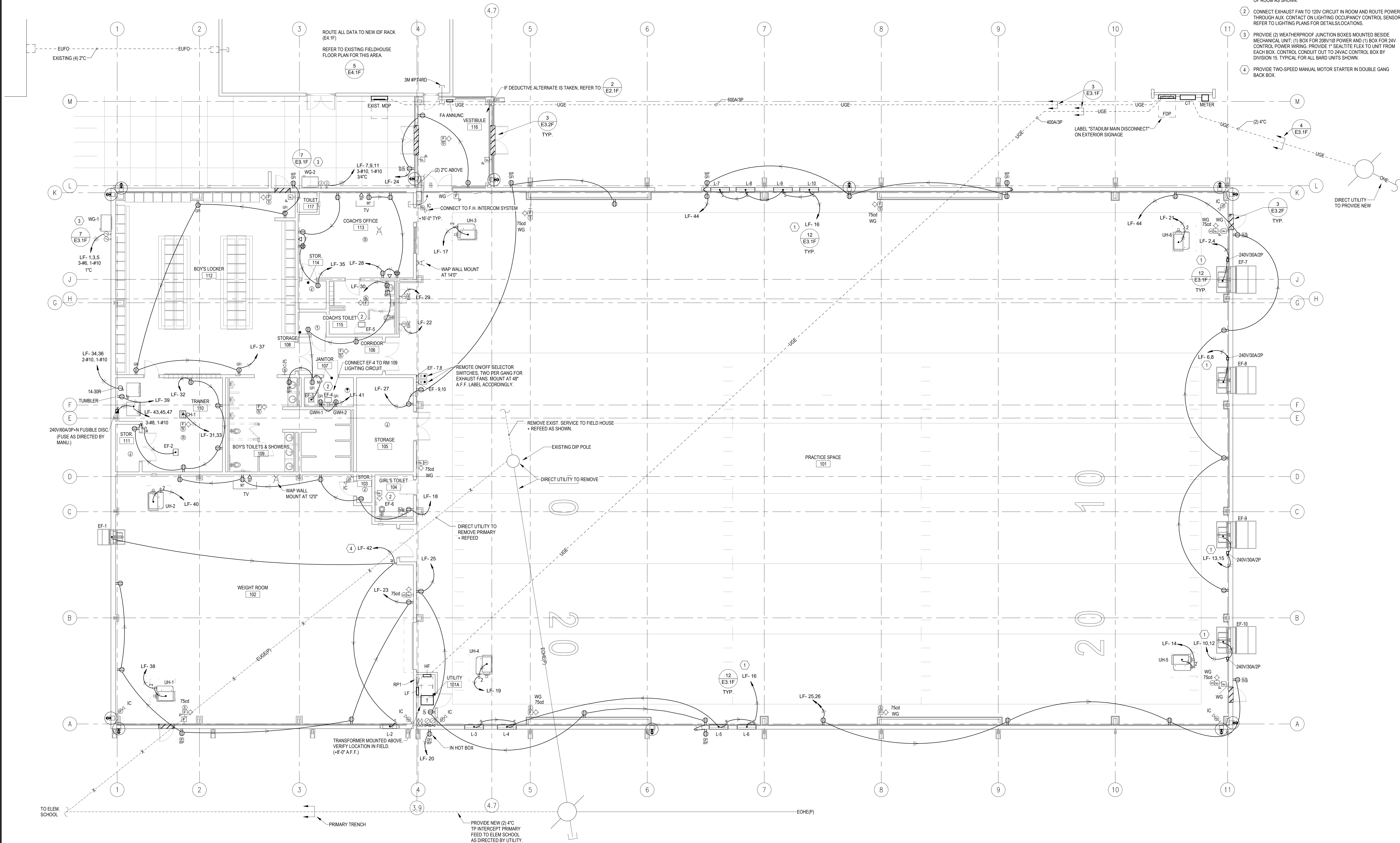
KEYED ELECTRICAL NOTES:  
 1. CONNECT EXHAUST FANS TO ROOM LIGHTING CIRCUIT.

NORTH  
 1 E2.1C  
 1/8" = 1'-0"  
**FLOOR PLAN - POWER & SYSTEMS**



DATE: 09-08-2020  
 PROJECT NO: 19074  
 DRAWN BY: SWJNJ  
 REVISION:

- KEYED ELECTRICAL NOTES:**
- 1 PROVIDE COMBINATION NEMA-1 NON-FUSIBLE DISCONNECT SWITCH RATED 240V/30A/2P WITH SIZE 3 STARTER. PROVIDE H-A SWITCH IN DOOR. LEAVE IN AUTO TO BE CONTROLLED BY REMOTE SWITCH. MOUNTED AT +5' A.F.F. ROUTE CIRCUIT FOR LOUVERS THROUGH AUX CONTACTS IN STARTER TO OPEN ACTIVATION AS NOTED. CONNECT STARTER TO REMOTE ON/OFF SELECTOR SWITCH ON WEST SIDE OF ROOM AS SHOWN.
  - 2 CONNECT EXHAUST FAN TO 120V CIRCUIT IN ROOM AND ROUTE POWER THROUGH AUX. CONTACT ON LIGHTING OCCUPANCY CONTROL SENSOR. REFER TO LIGHTING PLANS FOR DETAILS/LOCATIONS.
  - 3 PROVIDE (2) WEATHERPROOF JUNCTION BOXES MOUNTED BESIDE MECHANICAL UNIT. (1) BOX FOR 208V/10 POWER AND (1) BOX FOR 24V CONTROL POWER WIRING. PROVIDE 1" SEALTITE FLEX TO UNIT FROM EACH BOX. CONTROL CONDUIT OUT TO 24VAC CONTROL BOX BY DIVISION 15. TYPICAL FOR ALL BARD UNITS SHOWN.
  - 4 PROVIDE TWO-SPEED MANUAL MOTOR STARTER IN DOUBLE GANG BACK BOX.



NORTH  
 1  
 E2.1F 1/8" = 1'-0"  
**FLOOR PLAN - POWER & SYSTEMS**

2  
 E2.1F 1/8" = 1'-0"  
**DEDUCTIVE ALTERNATE - POWER & SYSTEMS**