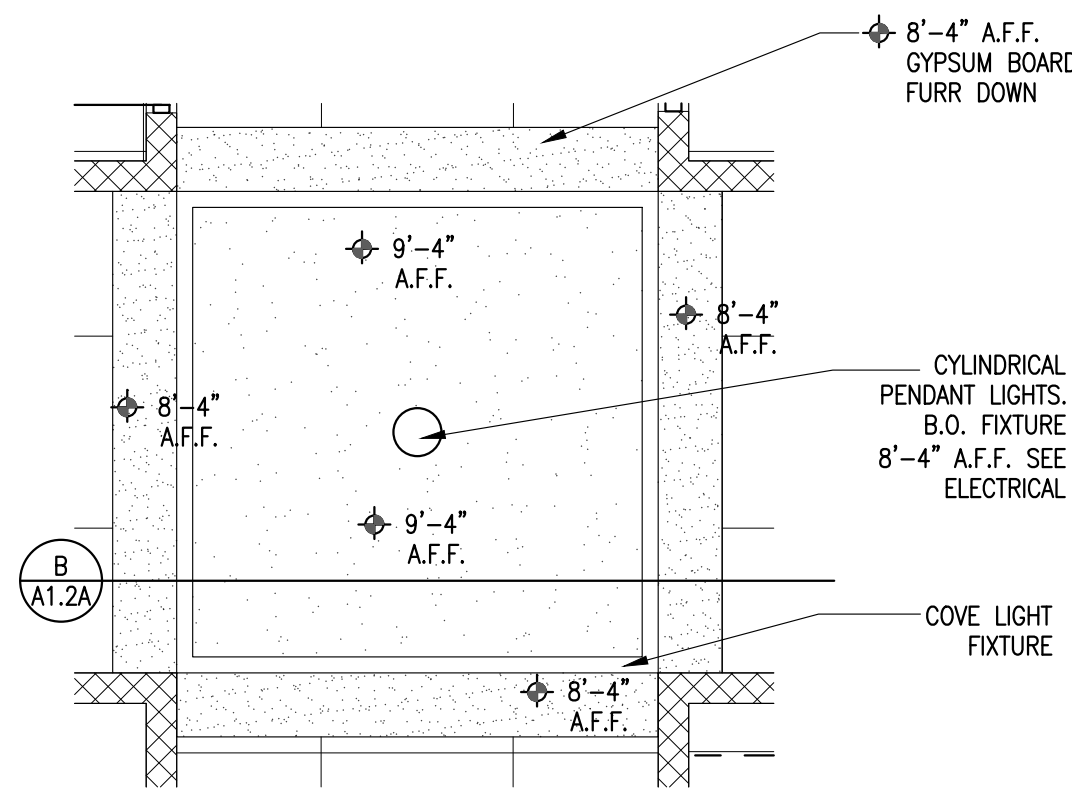


Architecture Plus, Inc. • July 01, 2020 • 4:14pm • File located @ P:\2019\19-21 Foreman School District - New High School\Architecture\19-21_A1.2a.dwg • Created by: gerianne@archplusinc.net

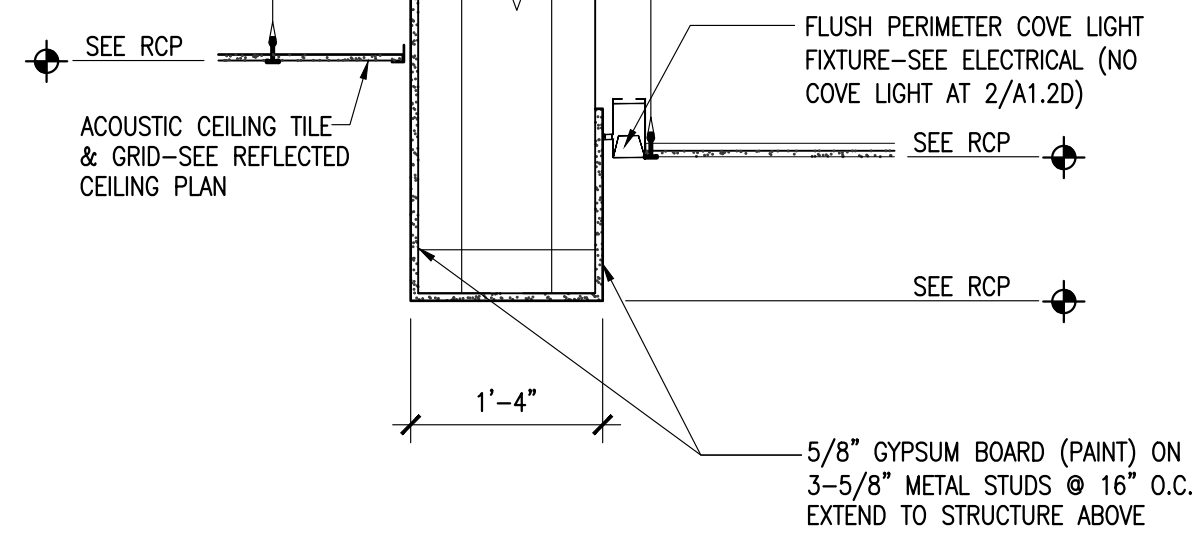
REFLECTED CEILING LEGEND	
	2x4 RECESSED MOUNTED FLUORESCENT LIGHT FIXTURE (FOR EMERGENCY LIGHTING SEE ELECTRICAL).
	FLUORESCENT STRIP LIGHT
	DECORATIVE PENDANT LIGHT FIXTURE
	STRIP FIXTURE ABOVE
	PENDANT LIGHT FIXTURE
	CEILING MOUNTED EXIT LIGHT
	WALL MOUNTED EXIT LIGHT
	WALL SCONCE
	RECESSED CAN LIGHT
	WALL MOUNTED LIGHT FIXTURE
	WALL PACKS
	SUPPLY AIR GRILL
	RETURN GRILLE
	SMALL RETURN AIR GRILL
	EXHAUST FAN
	RETURN AIR GRILL
	OUTSIDE AIR DIFFUSER
	ROUND AIR DIFFUSER
	METAL SOFFIT PANEL
	ACOUSTICAL TILE & GRID
	SUSPENDED GYPSUM BOARD CEILING
	FURRDOWN
	SMOKE DETECTOR
	HORN/STROBE STATION
	PULL STATION
	OCCUPANCY SENSORS
	REMOTE FIRE ALARM PANEL
	FIRE ALARM CONTROL PANEL
	EMERGENCY LIGHTS
	CEILING ELEVATION
	ALIGN
	SOUND ATTENUATION BLANKET ABOVE CEILING
SEE ELECTRICAL & MECHANICAL SHEETS FOR ADDITIONAL INFORMATION	

A REFLECTED CEILING PLAN - AREA 'A'
SCALE: 1/8" = 1'-0"

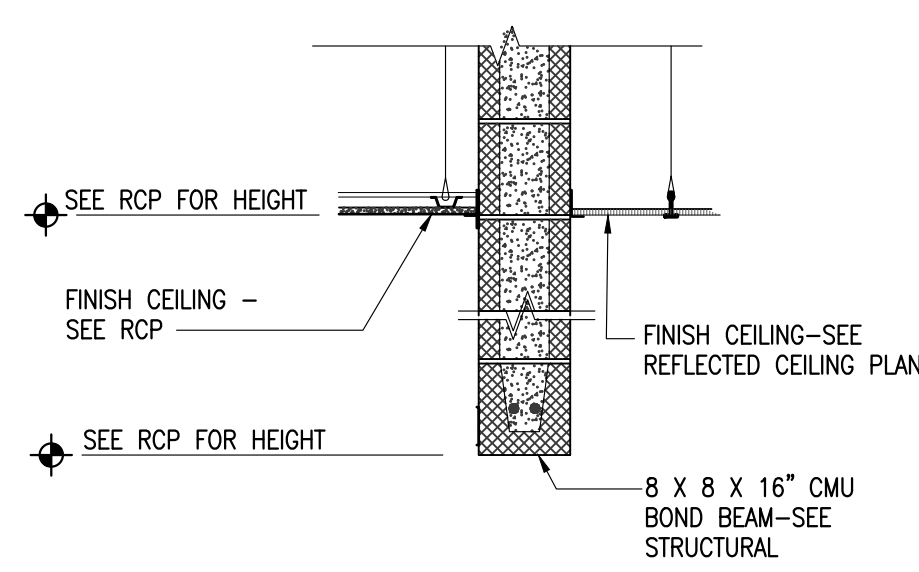
A ENLARGED DETAIL AT CORRIDOR INTERSECTION
SCALE: 1/4" = 1'-0"



B TYPICAL FURRDOWN SECTION GYPSUM WALLBD & METAL STUDS
SCALE: 3/4" = 1'-0"

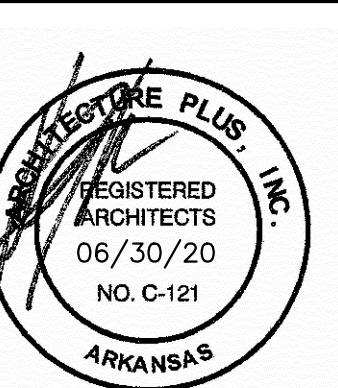


C BULKHEAD DETAIL
SCALE: 3/4" = 1'-0"



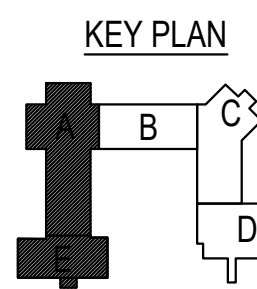
REFLECTED CEILING PLAN GENERAL NOTES

- ALL SPRINKLER HEADS, RECESSED LIGHTS, AND SMOKE DETECTORS SHALL BE CENTERED IN ACOUSTICAL CEILING TILES UNLESS NOTED OTHERWISE.
 - ALL SUSPENDED ACOUSTICAL CEILING TILE SHALL BE TYPE AND COLOR AS SHOWN IN THE FINISH SCHEDULE AND SPECIFICATIONS. ACT "A" IS TYPICAL WHERE ACT IS INDICATED UNLESS NOTED OTHERWISE.
 - ALL CEILING GRIDS SHALL BE CENTERED IN THE ROOM EXCEPT WHERE SPECIFICALLY NOTED OTHERWISE.
 - GYPSUM BOARD CEILINGS WHERE OCCUR SHALL BE 5/8" TYPE "X" ON SUSPENDED METAL FRAMING WITH HAT CHANNELS AT 16" O.C. UNLESS NOTED OTHERWISE.
 - MECHANICAL GRILLES AND DIFFUSERS INDICATED ON REFLECTED CEILING PLANS ARE FOR COORDINATION PURPOSES ONLY. SEE MECHANICAL DRAWINGS FOR EXACT TYPES AND QUANTITIES.
 - FIRE DAMPERS ARE REQUIRED IN ALL DUCTS WHICH PENETRATE FIRE RESISTIVE ASSEMBLIES.
 - REFER TO LS1.2 FOR ROOMS TO RECEIVE ONE-HOUR GYPSUM BOARD CEILING
 - CEILING SUBCONTRACTOR SHALL PROVIDE BLOCKING AND TEES SURROUNDING MECHANICAL GRILLES AND DIFFUSERS.
 - PROVIDE CEILING ACCESS PANELS IN GYPSUM BOARD CEILINGS WHERE REQUIRED FOR ACCESS ABOVE THE CEILING
 - CEILING HEIGHTS ARE AS NOTED ON THE ENLARGED REFLECTED CEILING PLANS AND ARE MEASURED FROM THE FINISH FLOOR OF THE SPACE UNLESS NOTED OTHERWISE
 - SEE SHEET F1.1A AND F1.2B/C FOR GYPSUM BOARD FURR DOWN PAINT COLORS.
- NOTE: THESE RCP GENERAL NOTES APPLY TO ALL REFLECTED CEILING PLAN SHEETS. SEE ENLARGED RCP'S SHEETS FOR ADDITIONAL INFORMATION



FOREMAN SCHOOL DISTRICT NEW HIGH SCHOOL

FOREMAN, ARKANSAS



ARCHITECTURE PLUS, INC.
907 South 21st Street Fort Smith, Arkansas 479/783-8395

REVISIONS:

PROJECT: 19-21
DATE: 06-30-2020

A1.2A

